

# LITEX PORTEX STANEX

Transport



Expect the best in every case

**EDAK**



# Contents

## **EDAK cases**

**Whatever the assignment, EDAK offers an individualized solution for every application.**

	<b>Page</b>
<b>STANEX</b>	
STANEX – Protection solution for every application	4
STANEX – Transport Cases	5
STANEX – Design	6
STANEX – Technical Details	7
STANEX – Individual solutions	8
<b>LITEX</b>	
LITEX – Value cases	10
LITEX – Design	11
<b>PORTEX</b>	
PORTEX – Handheld cases	12
PORTEX – Briefcases	13
PORTEX – Instrument cases	14

# Protection solution for every application



## EDAK cases

Whatever the assignment, EDAK offers an individualized solution for every application.

We solve packaging challenges. We are confronted with packing challenges each and every day. This would not be possible without total flexibility and that means flexibility in every way whether it be unique dimensions, special technical requirements,

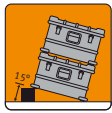
custom fixtures or delivery times. A line of affordable standard sizes is available for immediate delivery.

We manufacture top quality cases using corrosion resistant materials in a handsome design. EDAK cases are built for high stability and provide protection against spray water and dust. The rugged construction ensures protection of your goods for many years.



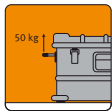
### Stacking weight load

STANEX cases can withstand a stacked load of 1200 kg.



### Stacking test

Two cases can be tilted to an angle of 15 degrees without lateral slip.



### Carrying handles

The number of carrying handles is optional. Load capacity of each handle is 50 kg. A rubber coating is provided for user comfort. The handles are securely mounted with rivets.



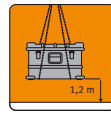
### Stirrup latches

Specially designed stirrup latches are used to ensure positive fastening and secure locking of the lid.



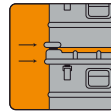
### Spray water and dust test

Spray water and dust protection IP54 conforms to test standard EN60529. Optional MIL-STD-810F Method 506.4 (blowing rain).



### Drop test

STANEX lightweight aluminium cases containing a net weight of 100 kg can withstand a fall from 120 cm onto a hard surface without sustaining damage which impairs normal function.



### Corner Reinforcements

Galvanized steel corner reinforcements are riveted to the case bottom and covers to provide additional strength, protection and positive stacking.

### Foam Lining

We offer general foam lining with a thickness of 25 mm to 50 mm, or with cushioning configured specifically for your payload based on the fragility and dimension of the equipment.

### Finish

Natural aluminum or painted finish available.

### Sizes

Four standard sizes are available from our catalog and of course custom requirements.

# STANEX – Transport Cases

The degree of protection built into STANEX light metal cases is extremely high. They are exceptionally resistant against drop shock, mechanical shock and vibrations. When closed they provide excellent protection against intrusion of sand and dust, snow and ice. They are suitable for the tropics and are termite proof. They protect against damaging intrusion of dust and water IP54 per EN 60529.

Extreme temperatures or drastic changes in temperature can be just as damaging as the effects of aggressive, salty and moist atmospheres. Reinforced aluminum construction provides the best protection against these dangers as well as UV rays and high frequency electromagnetic fields. The high strength, corrosion resistant alloy ensures the long life of EDAK cases. Cleaning is fast and easy. Finish with standard or special paint is available on order.

## STANEX light metal cases – pack up your troubles and smile.

We are proud of our quality products. Proud too that hundreds of types and models are already being used to protect sensitive and valuable goods. These cases don't need to be handled with kid gloves. On the contrary, they perform best in rough conditions. This is when they show off their best protective qualities.



## Standard sizes

Type	External dimension (L x W x H – in mm)	Internal dimension (L x W x H – in mm)	Clearance (L x W – in mm)	Number of handles	Weight (in kg)	Plywood skids
EF 4305	605 x 415 x 254	570 x 380 x 217	530 x 340	3	6.5	bottom
EF 4310	605 x 415 x 500	570 x 380 x 463	530 x 340	2	8.3	bottom
EF 4315	825 x 605 x 254	790 x 570 x 217	750 x 530	4	12.1	bottom and top
EF 4320	825 x 605 x 500	790 x 570 x 463	750 x 530	4	15.3	bottom and top

# STANEX – Design

## Our competence is your strength

The proverbial robustness of STANEX light metal cases is noticeable already from the first glance at the outside. They are built to endure the toughest loading and stacking demands, even the occasional fall from the back of a lorry is not too much for these rugged cases. Furthermore, they can be safely stacked with their contents which saves on expensive storage space.



STANEX is constructed of a special light weight aluminum alloy and is highly resistant to corrosion in salt fog and other aggressive environments. STANEX cases in standard sizes have IATA approval UN 4B1/Y120/S/89/CH2659/EDAK for air shipment of hazardous cargo and offer IP54 protection against dust and moisture.

# STANEX – Technical Details



The case edges have special cast corners which serve as ... which tightly connect the case parts. All the parts are then riveted. The result is an exceptionally stable construction, even for larger size light metal cases.



Galvanized steel corner elements provide not only additional robustness but also make an easy job of stacking. Plywood skids add to the strength and ease of handling. Aluminium skids upon request.



Depending on size and other requirements, two or more rubber coated, spring-loaded drop handles with a 90° open angle are attached for comfortable carrying of up to 50 kg per handle. Secure closing is provided by specially designed stirrup latches and padlock fittings.



STANEX transport cases are IATA certified for the transport of hazardous goods and are dust and moisture proof per IP54.



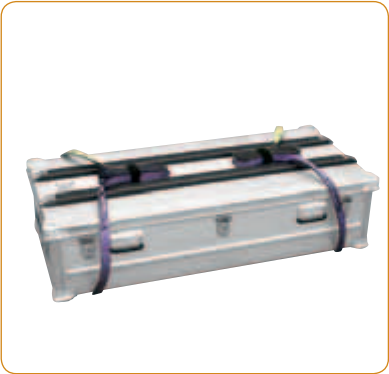
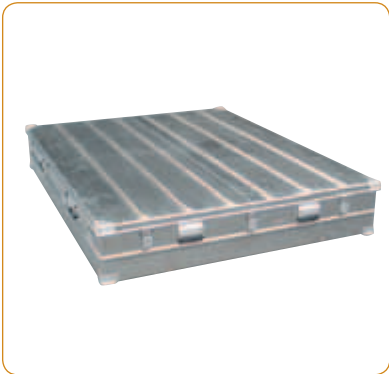
**The mobility of emergency equipment can be a matter of life and death. Precision instruments remain professionally packed over long periods in perfect condition and are ready for use at all times.**

The robust, stackable and water-tight light metal cases are exceptionally suitable for transport and storage of sensitive and valuable goods. Ventilation slits can be built in when necessary for better air circulation. The addition of locks for hazardous materials is also possible.

**Tougher standards apply for use on the go or outdoor applications under stressful environmental conditions. Here there is a great need for safe transport and storage. The performance readiness of sensitive equipment must be assured at all times.**



# STANEX – Individual solutions



**Hood Case IP54**

**Hazardous Goods Case**  
approved per ADR/RID



The Litex value case offers an economical solution for your transport and storage needs. It has an excellent volume to weight ratio. It is manufactured of the same lightweight aluminum alloy as the Stanex case. Litex value cases stack on top of each other and the standard sizes are dimensioned for the cases to fit on a Euro pallet.

Besides the standard sizes, we will make sizes to suit your requirements in any quantity. The Litex value case can also be customized by fitting foam lining or inserts and by painting to your needs.



## Standard sizes

Type	External dimension (L x W x H – in mm)	Internal dimension (L x W x H – in mm)	Clearance (L x W – in mm)	Number of handles	Number of latches
EF 3001	400 x 300 x 340	383 x 272 x 300	375 x 264	1	1
EF 3002	600 x 400 x 220	571 x 372 x 188	563 x 364	2	2
EF 3003	600 x 400 x 400	571 x 372 x 368	563 x 364	2	2
EF 3004	800 x 600 x 220	773 x 572 x 188	765 x 564	4	2
EF 3005	800 x 600 x 400	773 x 572 x 368	765 x 564	4	2

Other sizes are available upon request

# LITEX – Design

The Litex value case comprises a body and a hinged lid. The body has a perimeter reinforcement around the aperture. The container is fitted with one or two stirrup latches (according to size). A turn screw device ensures that the latches are lockable. One, two or four spring loaded handles with plastic coating (according to size of case) are riveted to the case body. Maximum weight loading is 50 kg on each handle.



## Painting

Plain or painted finish. All RAL colours are available. The modular sizes of LITEX value cases mean that models with different standard dimensions will all fit on a Euro pallet.



# PORTEX – Handheld cases



**The Portex briefcase combines an attractive design with clean lines and rugged durability. It is built for high mobility where its tough design and lightweight construction is appreciated. It's ideal for use as a sample case and for safe transport of valuable electronics or instruments.**

The outer shell is made from aluminum. An internal mounting flange is available for installation of electronics panel or instrument panel. Due to minimal corner radii the Portex briefcase offers optimal useable space in relation to case size.

For customizing the case can be foam lined. Several foam lining materials are available. As with all of our cases, the Portex briefcase can be built to suit in size, lining and accessories.



The PORTEX instrument case is designed with the most demanding needs for protection of sensitive equipment in scientific, military, marine, medical, agriculture or geophysical applications during field applications and transport in mind. To protect instruments in transit or operation in hostile environments, PORTEX instrument cases meet or beat most required specifications. They are available in a wide range of sizes and options.



## Briefcase standard sizes

Type	Finish (Surface)	Dimension external (L x W x H – in mm)	Dimension internal (L x W x H – in mm)	Weight (in kg)
EF 2118	Natural	456 x 360 x 131	450 x 330 x 128	3.2
EF 2119	Natural	526 x 380 x 182	520 x 350 x 179	3.6
EF 2141	Texture	456 x 360 x 131	450 x 330 x 128	2.6
EF 2142	Texture	526 x 380 x 182	520 x 350 x 179	3.0

# PORTEX – Briefcases

**The PORTEX briefcase is designed to protect items such as small instruments, tools, cameras, anything that needs to be hand-carried and which would be damaged in a soft case. Also, mobile instruments such as sophisticated GPS devices.**

The PORTEX briefcase is designed with internal modification in mind. It uses the same aluminum sheet shell process as our other cases. As standard product we offer two sizes and two distinct finishes. We can modify to accommodate interior brackets, mounts, compartments, and markings such as silk screening. Custom designed partitions and fold-down dividers are available. The cover can also be made removable.

## Protection

- Climatic stress such as rain, snow, hail, humidity, heat and blowing dust and sand
- Minor shock and vibration with the use of a foam lining
- Electro Static Discharge with the use of ESD rated foam

## Characteristics

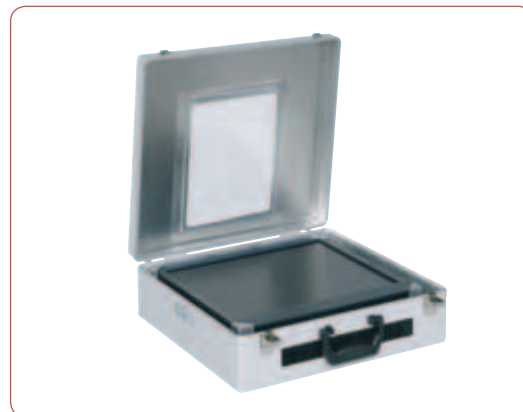
- Rugged aluminum construction
- Chrome plated ball type closure
- Luggage type handle
- Moisture proof
- Corrosion resistant piano type hinges with stainless steel pin

## Weatherproofing

- Interlocking tongue and groove extrusion for watertight protection

## Finish

- Natural aluminum or hammered finish that resists scratching
- Several foam materials are available, including ESD
- Rigid aluminum partitions are also available



# PORTEX – Instrument cases

The PORTEX instrument case is extremely rugged, versatile and waterproof, offering the widest ranges of sizes and options available, with both short lead times and low cost. They are ideal for the safe transportation and field operation of delicate equipment for commercial, industrial and military use.

## Design characteristics

- Meets all applicable requirements of MIL-28800, performance levels of MIL-STD-810F, and the watertight requirements of IP65. Optional IP68 solution available.
- Protection of latches and hardware is achieved through the use of guarded latches and handles or by incorporating “V” rails along the perimeter of the case.
- Wide range of sizes available
- Can be configured to exact size required, unlike deep-drawn cases
- Shock and vibration isolation options are available
- Offers many special features that help ensure the safe delivery of intricate instruments in transit and operation in hostile environments.

## Special features

- Stirrup latches are used to insure positive fastening and security locking of lid
- Flange available for mounting instruments and electronics
- Available with foam interiors engineered to your specifications
- Spring loaded recessed top and side handles
- Pressure relief valve manual or automatic
- Custom design requirements are easily incorporated to accommodate special connectors, hardware, etc.





**Text**  
**Images**

EDAK AG, JH, 2500, March 2008  
Crocì & du Fresne Fotografie, Bern  
Foto Studio Masato, Bern

**Concept/Design**

MASCIADRI consulting | communication & design AG, Bern

Subject to change  
© EDAK AG MILEX 2008

